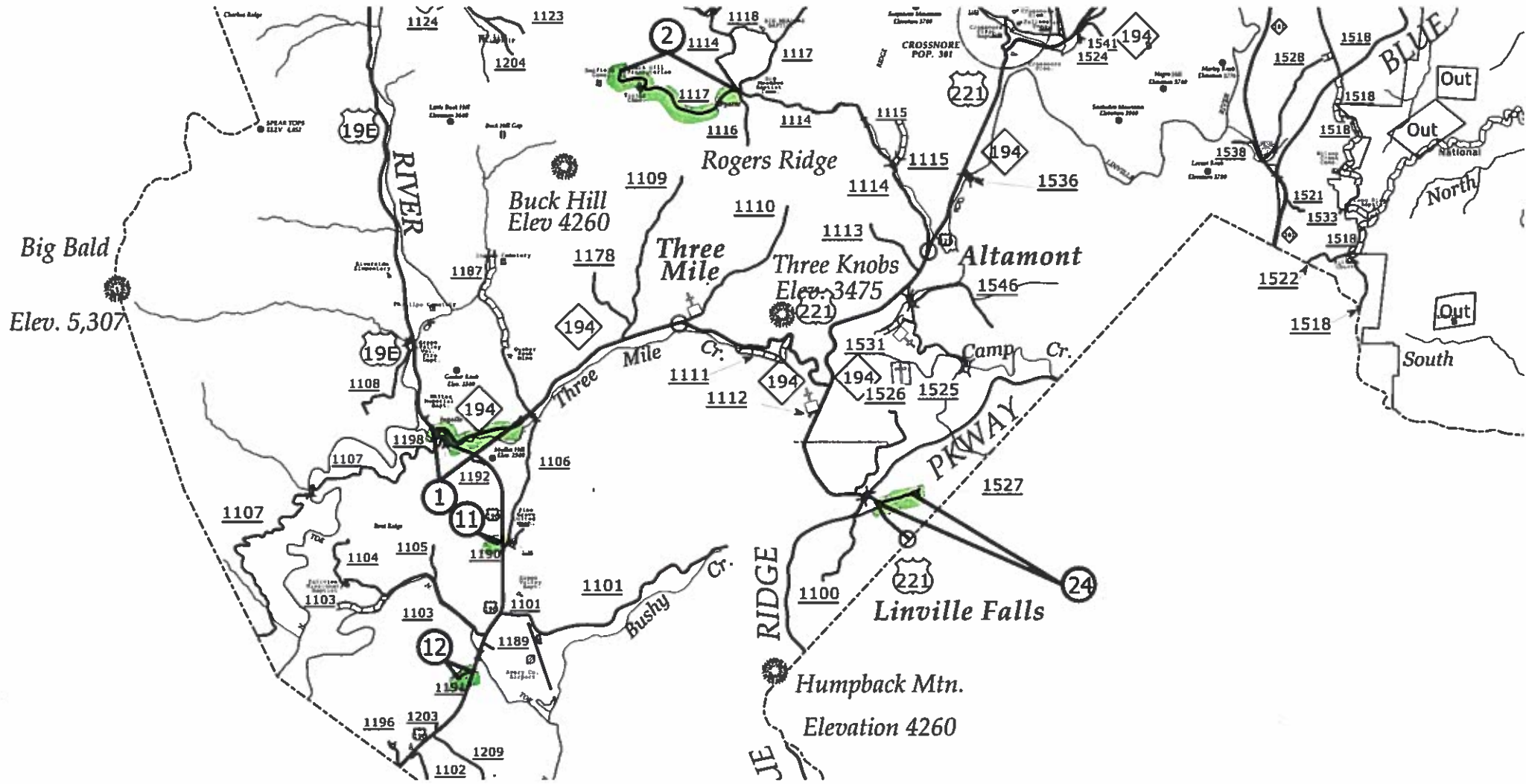
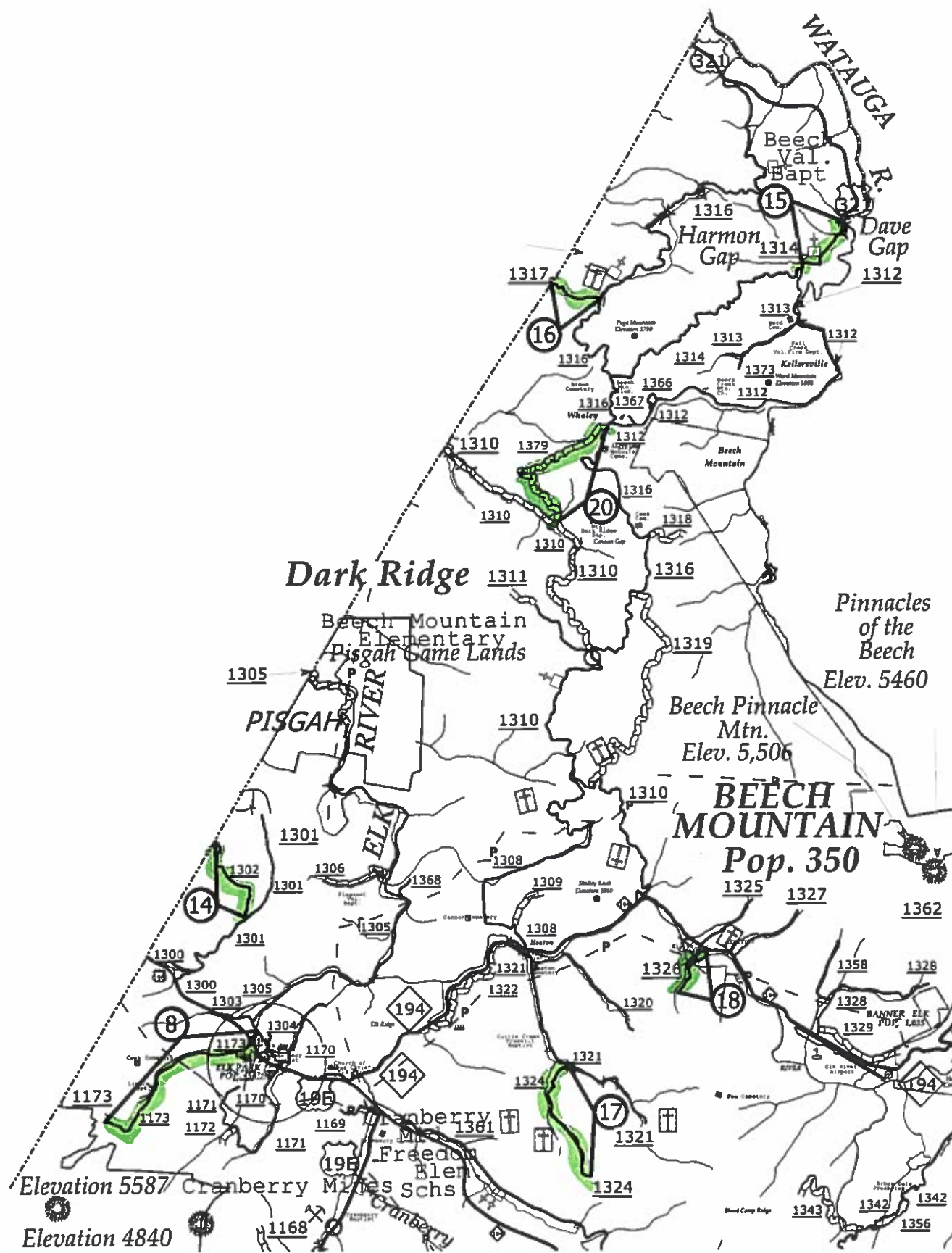


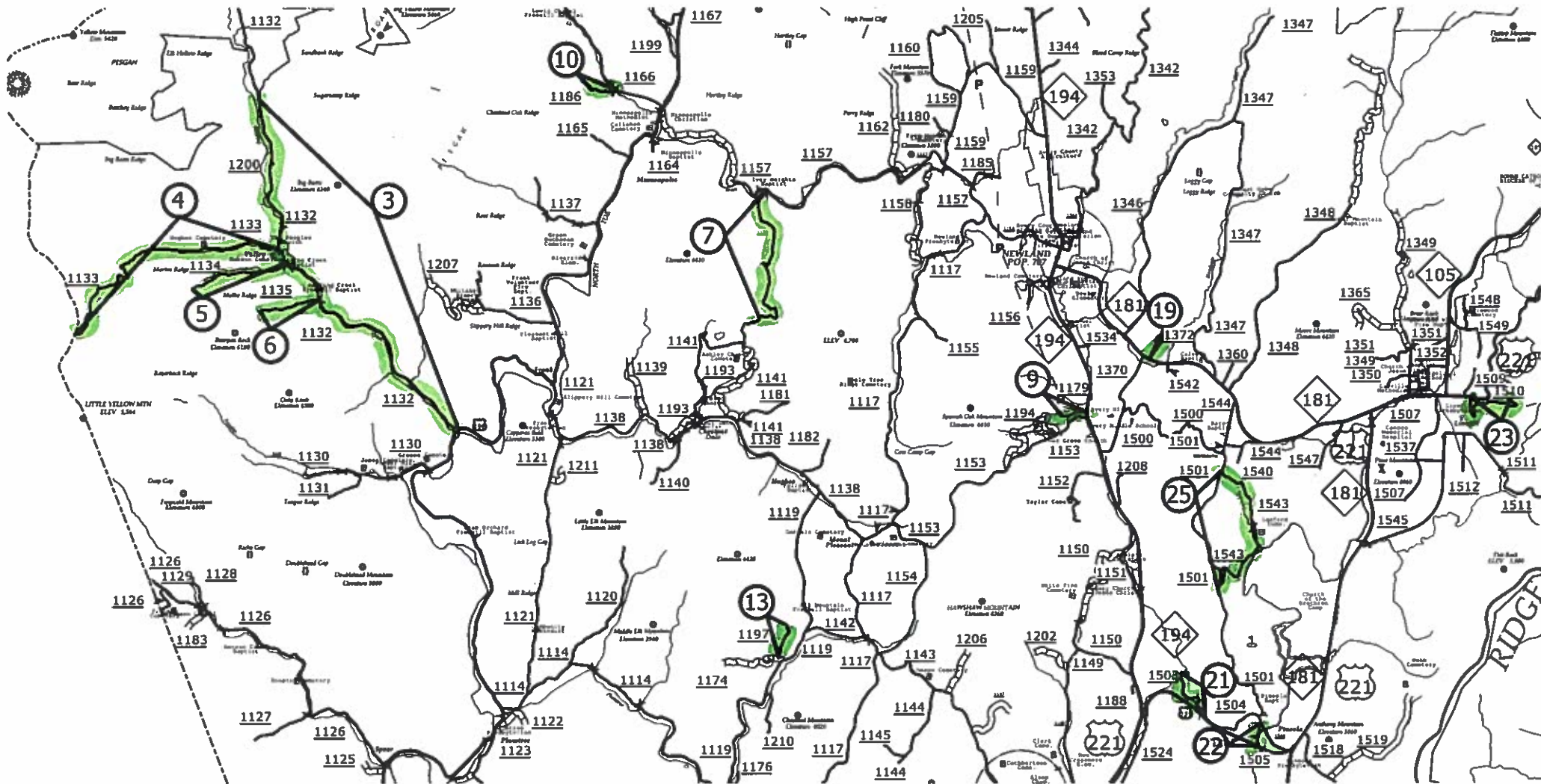
2019 AST
AVERY COUNTY



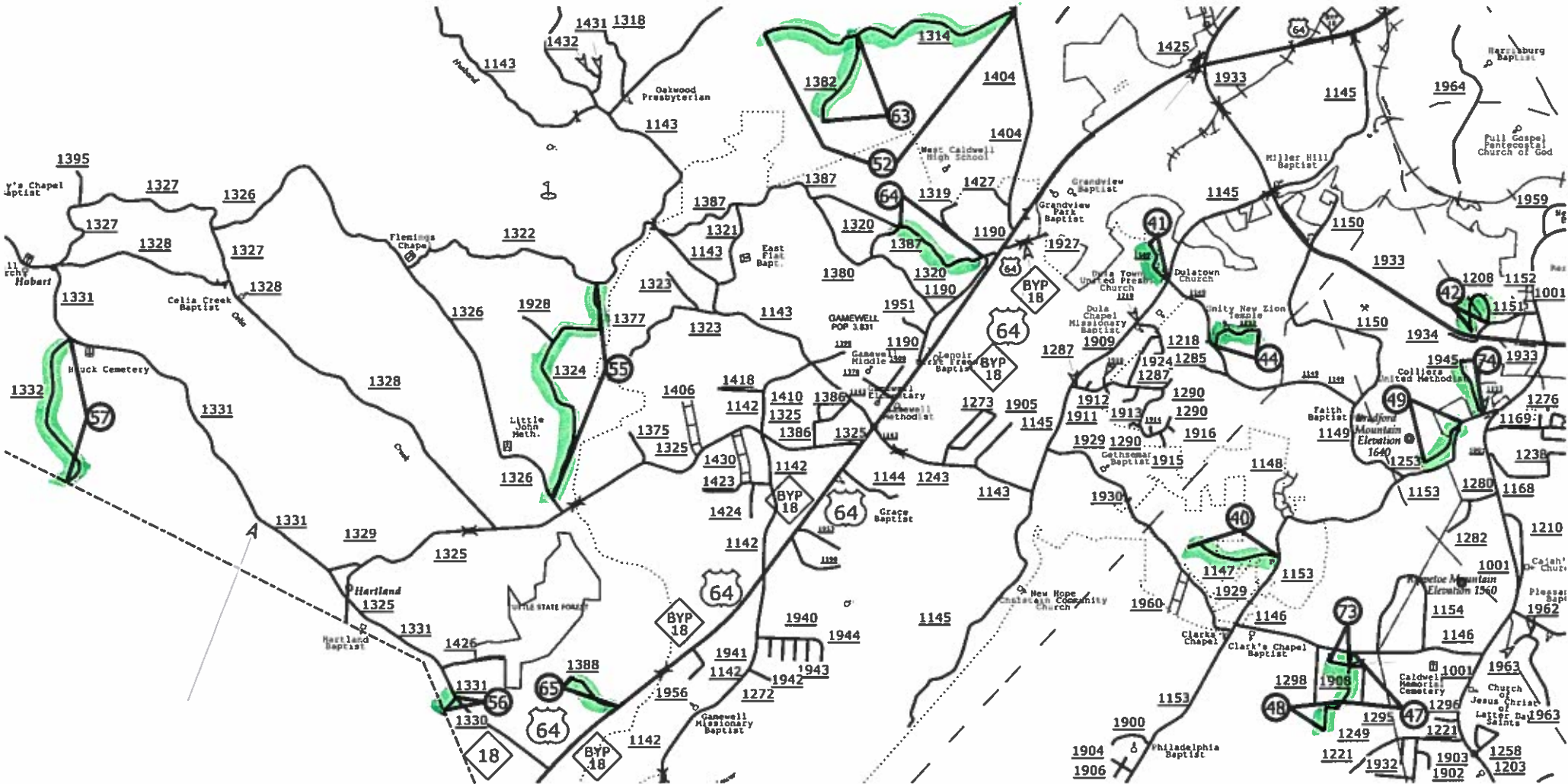
2019 AST
AVERY COUNTY



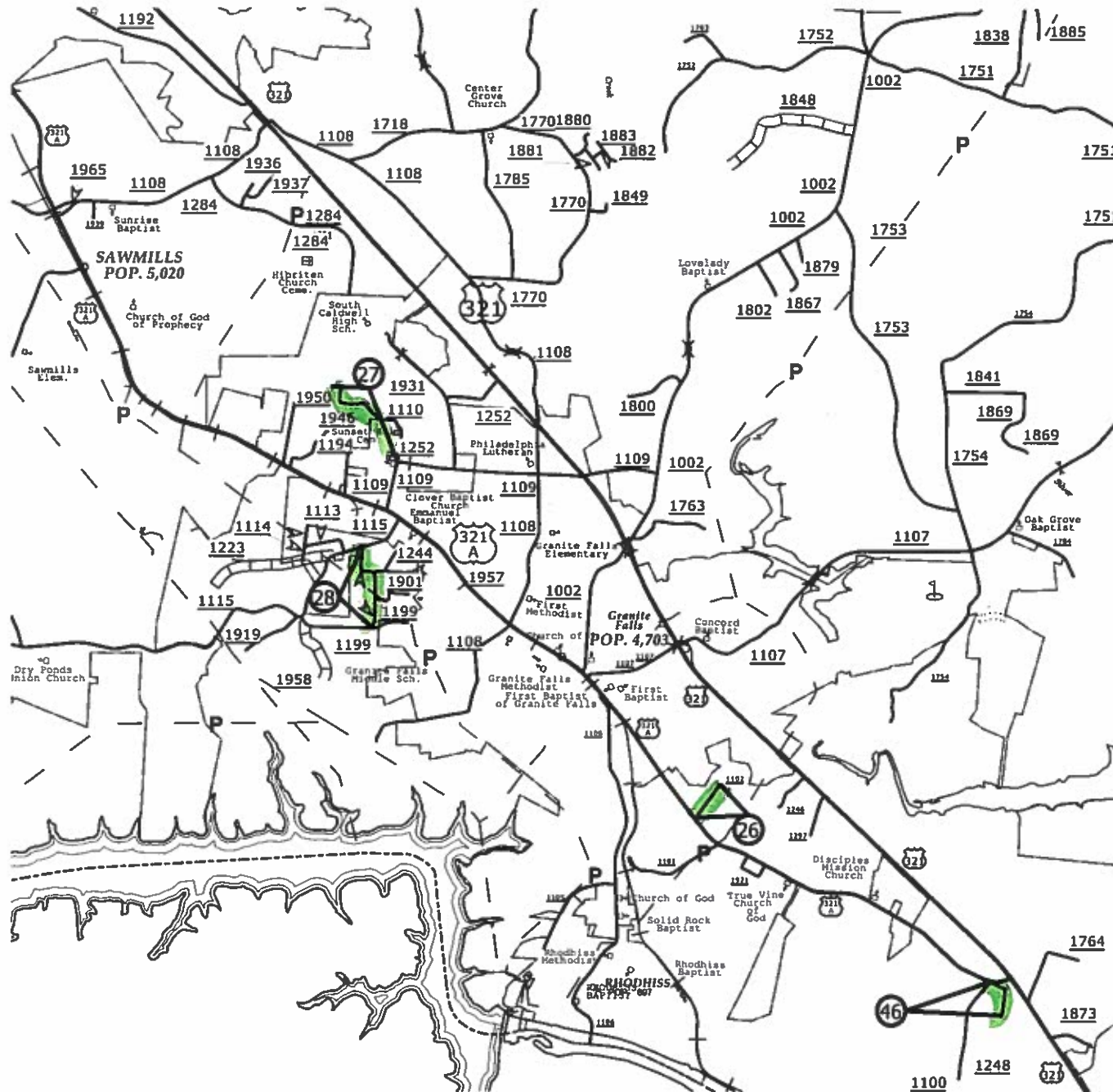
2019 AST
AVERY COUNTY



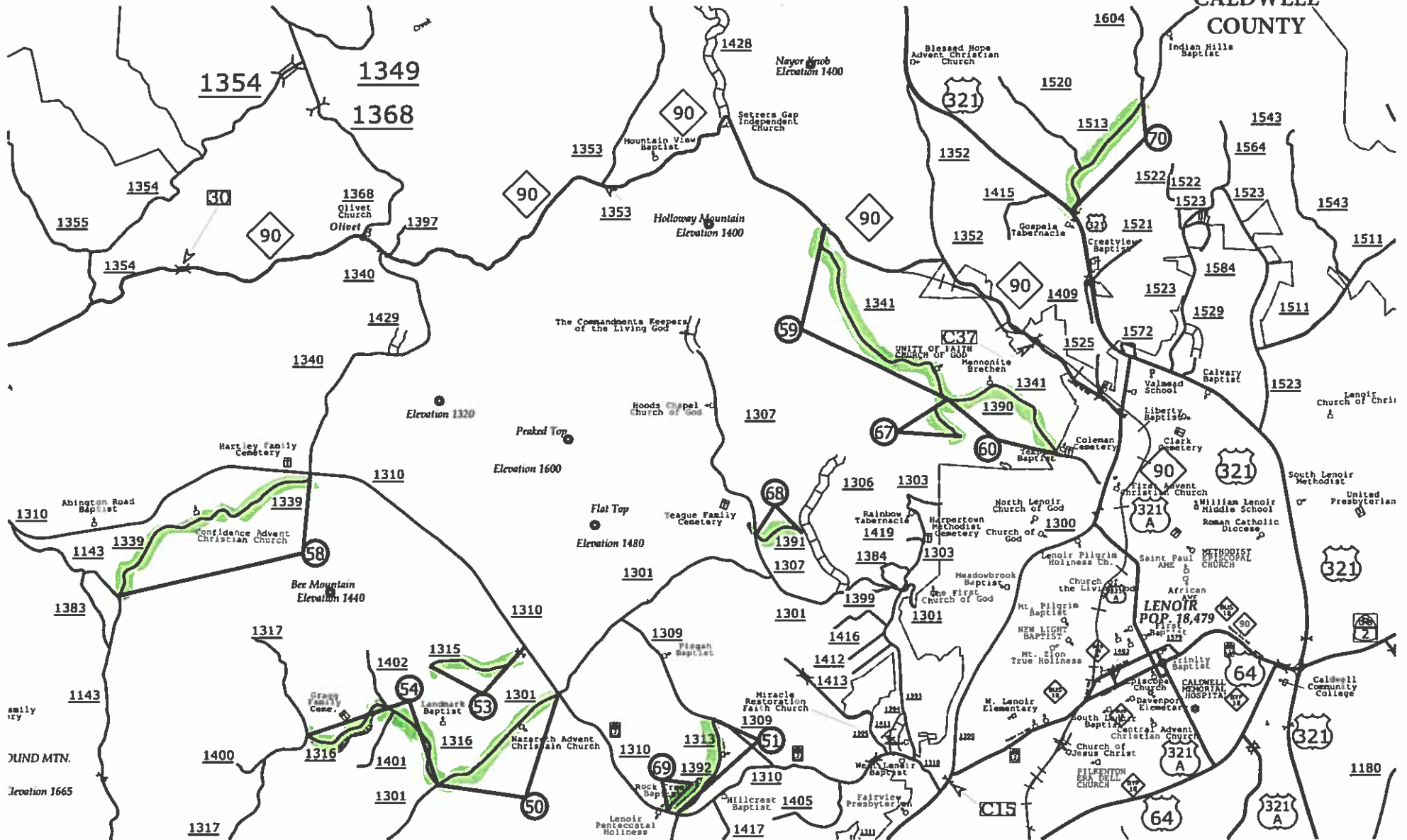
2019 AST
CALDWELL COUNTY



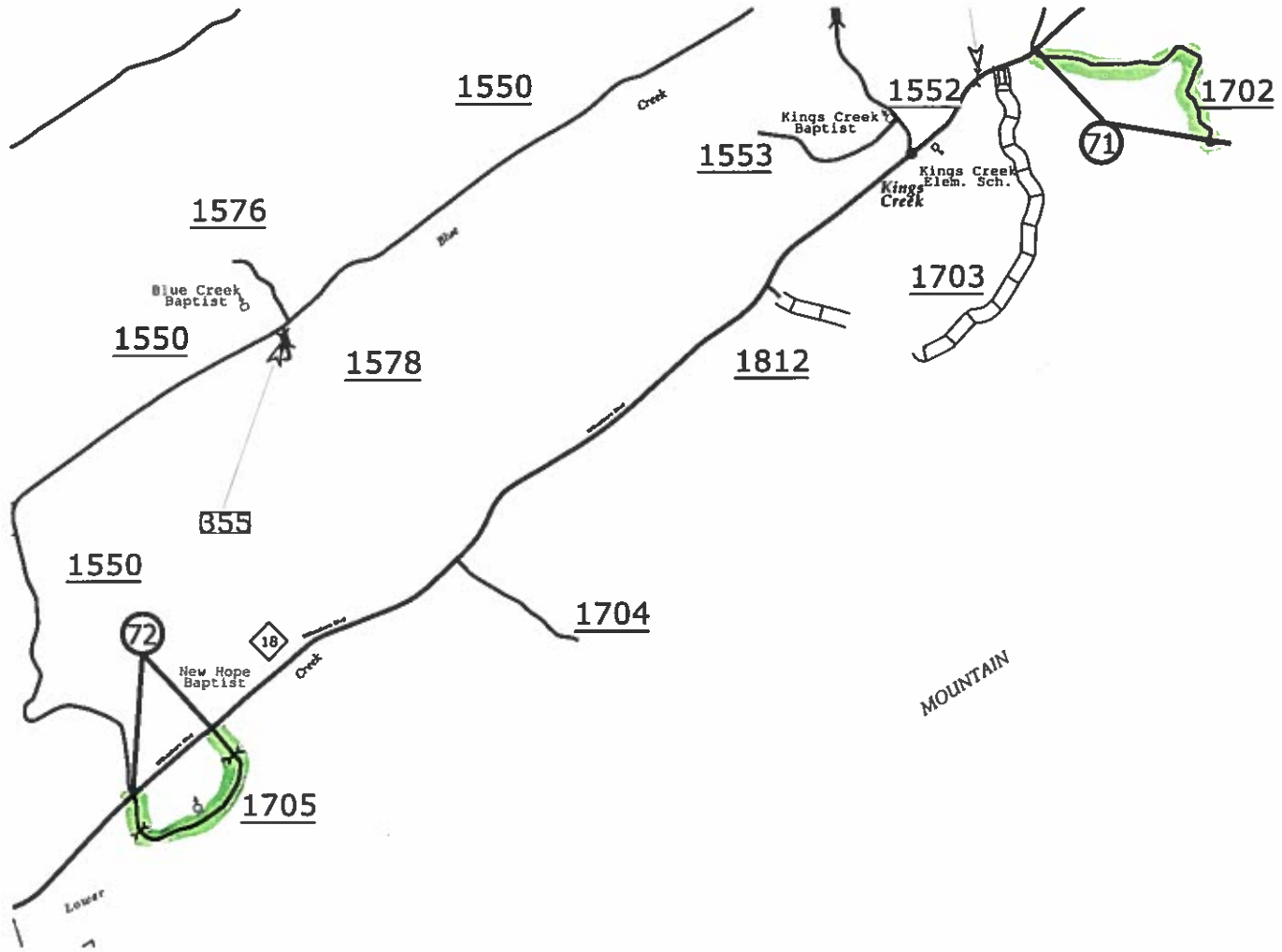
2019 AST
CALDWELL
COUNTY



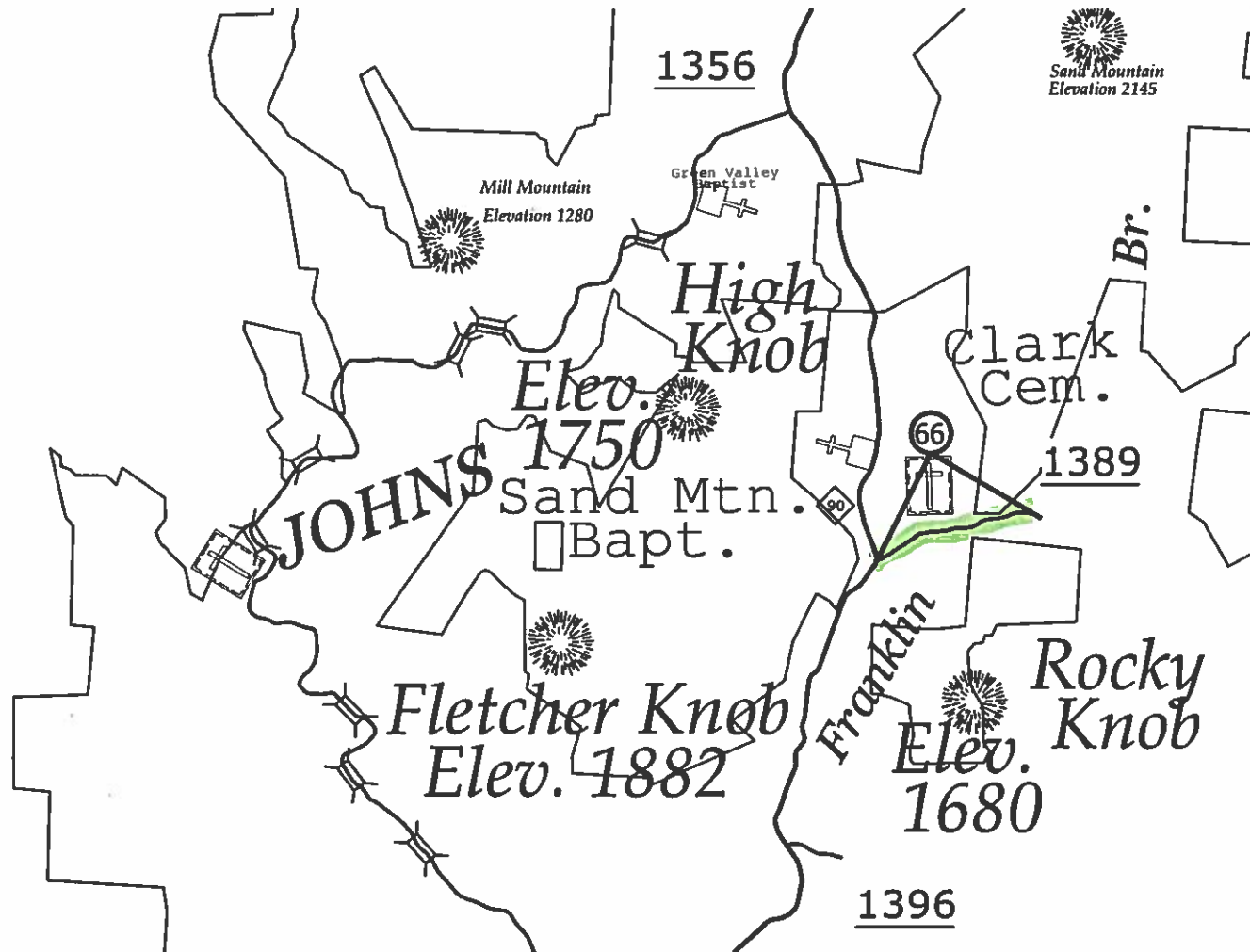
2019 AST
CALDWELL
COUNTY



2019 AST
CALDWELL COUNTY

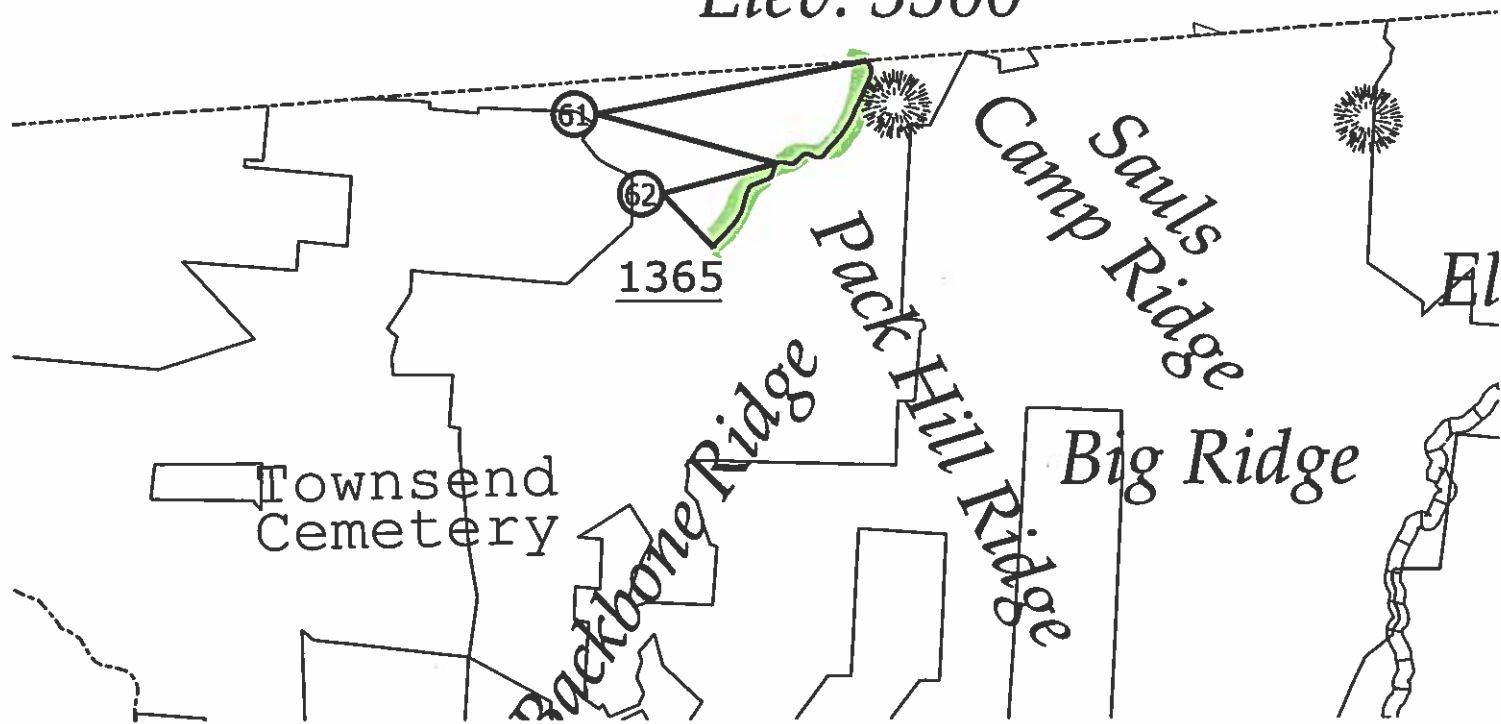


2019 AST
CALDWELL COUNTY

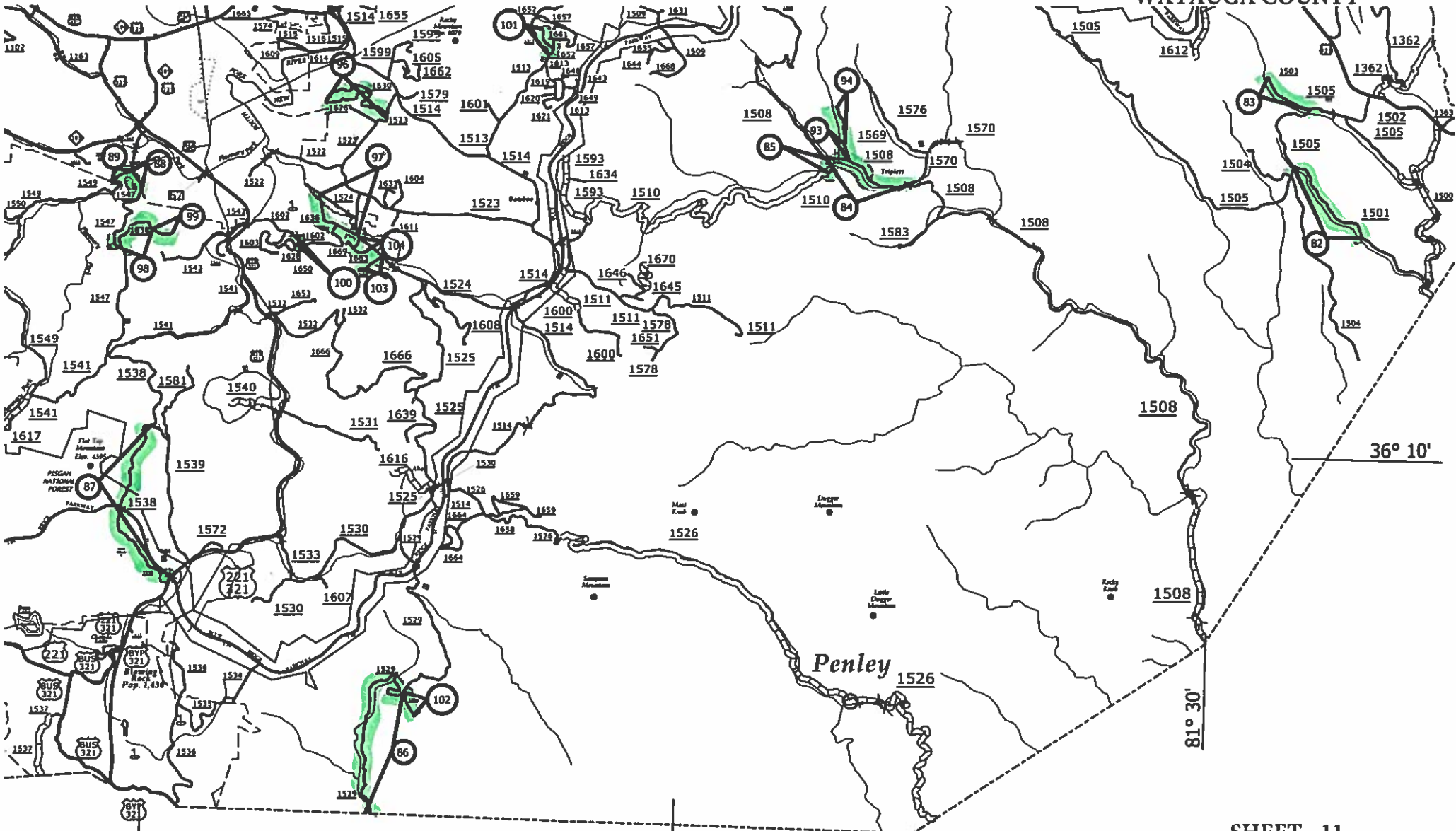


Round Mountain
Elevation 3780

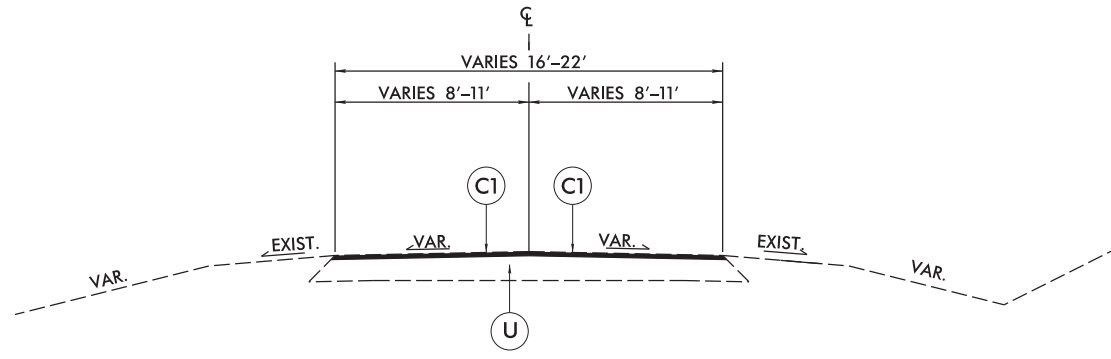
Gay Mtn.
Elev. 3500



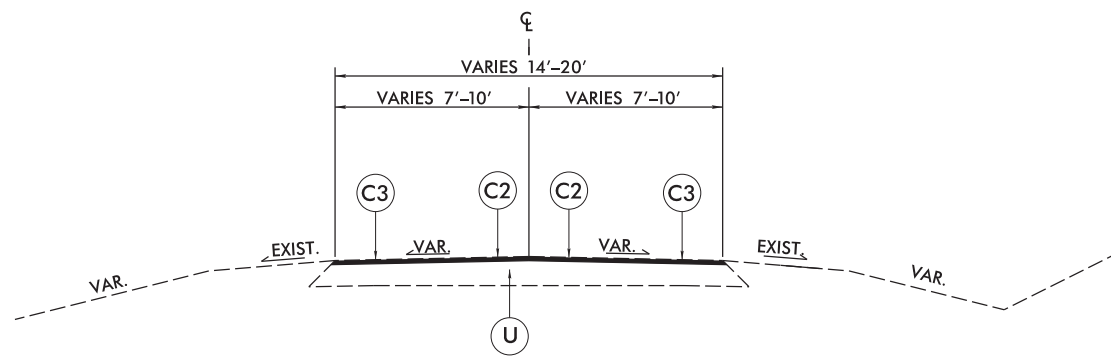
2019 AST
WATAUGA COUNTY



PAVEMENT SCHEDULE	
C1	PROP. ASPHALT SURFACE TREATMENT, TRIPLE SEAL
C2	PROP. ASPHALT SURFACE TREATMENT, DOUBLE SEAL
C3	PROP. ASPHALT SURFACE TREATMENT, SLURRY SEAL
U	EXISTING PAVEMENT.



TYPICAL SECTION NO. 1



TYPICAL SECTION NO. 2

REVISIONS

8/17/99

1/3/2019
 User: JENNIFER
 Project: 2_TYP_rdy_psh.dgn

PROJECT NO.	SHEET NO.	TOTAL NO.
2019CPT.11.21.20032, 2019CPT.11.21.20862 2019CPT.11.21.20992		

SUMMARY OF QUANTITIES

PROJECT NO	COUNTY	MAP NO	ROUTE	FROM DESCRIPTION	TO DESCRIPTION	TYP NO	LANES	LANE TYPE	LENGTH MI	WIDTH FT	ASPHALT SURFACE TREATMENT, TRIPLE SEAL SY	ASPHALT SURFACE TREATMENT, CAPE SEAL SY	EMULSION FOR ASPHALT SURFACE TREATMENT GAL	VACUUM TRUCK WK	BLOTTING SAND TON
2019CPT.11.22.10062	Avery	1	NC 194	US 19E	SR 1106	1	2	2WU	0.91	18	9,610		7,592		
TOTAL FOR PROJ NO. 2019CPT.11.22.10062															

2019CPT.11.22.20062	Avery	2	SR 1117	SR 1114	EOM	1	2	2WU	1.32	16	12,390		9,788	5	400
2019CPT.11.22.20062	Avery	3	SR 1132	US 19E	EOP	1	2	2WU	3.58	16	33,604		26,547		
2019CPT.11.22.20062	Avery	4	SR 1133	SR 1132	EOM	1	2	2WU	2.23	18	23,549		18,604		
2019CPT.11.22.20062	Avery	5	SR 1134	SR 1132	EOM	1	2	2WU	0.82	16	7,697		6,081		
2019CPT.11.22.20062	Avery	6	SR 1135	SR 1132	EOM	1	2	2WU	0.50	16	4,693		3,707		
2019CPT.11.22.20062	Avery	7	SR 1163	SR 1157	EOP	1	2	2WU	1.55	16	14,549		11,494		
2019CPT.11.22.20062	Avery	8	SR 1173	SR 1303	EOM	2	2	2WU	1.65	18	17,424		13,765		
2019CPT.11.22.20062	Avery	9	SR 1179	NC 194	EOM	2	2	2WU	0.20	16	1,877		1,483		
2019CPT.11.22.20062	Avery	10	SR 1186	SR 1166	EOM	1	2	2WU	0.20	16	1,877		1,483		
2019CPT.11.22.20062	Avery	11	SR 1190	US 19E	EOM	1	2	2WU	0.10	20	1,173		927		
2019CPT.11.22.20062	Avery	12	SR 1191	US 19E	BEG CONC PVMT	1	2	2WU	0.14	20	1,643		1,298		
2019CPT.11.22.20062	Avery	13	SR 1197	SR 1174	EOM	1	2	2WU	0.32	16	3,004		2,373		
2019CPT.11.22.20062	Avery	14	SR 1302	SR 1301	TN LINE	1	2	2WU	0.87	18	9,187		7,258		
2019CPT.11.22.20062	Avery	15	SR 1314	SR 1312	US 321	1	2	2WU	0.62	17	6,183		4,885		
2019CPT.11.22.20062	Avery	16	SR 1317	SR 1316	TN STATE LN	1	2	2WU	0.49	18	5,174		4,088		
2019CPT.11.22.20062	Avery	17	SR 1324	SR 1321	EOM	1	2	2WU	1.21	18	12,778		10,094		
2019CPT.11.22.20062	Avery	18	SR 1326	NC 194	EOM	1	2	2WU	0.50	18	5,280		4,171		
2019CPT.11.22.20062	Avery	19	SR 1372	NC 181	EOM	1	2	2WU	0.16	21	1,971		1,557		
2019CPT.11.22.20062	Avery	20	SR 1379	SR 1316	SR 1310	1	2	2WU	1.54	18	16,262		12,847		
2019CPT.11.22.20062	Avery	21	SR 1503	US 221	EOM	1	2	2WU	0.50	16	4,693		3,707		
2019CPT.11.22.20062	Avery	22	SR 1505	US 221	SR 1504	1	2	2WU	0.19	18	2,006		1,585		
2019CPT.11.22.20062	Avery	23	SR 1510	US 221	EOM	1	2	2WU	0.71	16	6,665		5,265		
2019CPT.11.22.20062	Avery	24	SR 1527	BEG PVMT	EOM	1	2	2WU	0.30	18	3,168		2,503		
2019CPT.11.22.20062	Avery	25	SR 1543	SR 1501	SR 1501	1	2	2WU	1.46	18	15,418		12,180		
TOTAL FOR PROJ NO. 2019CPT.11.22.20062															

PROJECT NO.	SHEET NO.	TOTAL NO.
2019CPT.11.21.20032, 2019CPT.11.21.20862 2019CPT.11.21.20992		

SUMMARY OF QUANTITIES

PROJECT NO	COUNTY	MAP NO	ROUTE	FROM DESCRIPTION	TO DESCRIPTION	TYP NO	LANES	LANE TYPE	LENGTH MI	WIDTH FT	ASPHALT SURFACE TREATMENT, TRIPLE SEAL SY	ASPHALT SURFACE TREATMENT, CAPE SEAL SY	EMULSION FOR ASPHALT SURFACE TREATMENT GAL	VACUUM TRUCK WK	BLOTTING SAND TON
2019CPT.11.22.20142	Caldwell	26	SR 1102	US 321 ALT	EOM	1	2	2WU	0.20	18.00	2,112		1,668		
2019CPT.11.22.20142	Caldwell	27	SR 1110	SR 1109	EOM	1	2	2WU	0.61	18.00	6,442		5,089		
2019CPT.11.22.20142	Caldwell	28	SR 1112	SR 1115	SR 1199	1	2	2WU	0.43	18.00	4,541		3,587		
2019CPT.11.22.20142	Caldwell	29	SR 1123	SR 1124	SR 1130	1	2	2WU	1.58	18.00	16,685		13,181		
2019CPT.11.22.20142	Caldwell	30	SR 1127	SR 1123	SR 1212	1	2	2WU	1.19	18.00	12,556		9,920		
2019CPT.11.22.20142	Caldwell	31	SR 1127	SR 1212	MP 1.85	1	2	2WU	0.66	18.00	14,150		11,179		
2019CPT.11.22.20142	Caldwell	32	SR 1127	MP 1.85	SR 1130	1	2	2WU	1.34	18.00	6,970		5,506		
2019CPT.11.22.20142	Caldwell	33	SR 1132	SR 1130	EOM	1	2	2WU	0.81	18.00	8,554		6,757		
2019CPT.11.22.20142	Caldwell	34	SR 1136	SR 1135	SR 1001	1	2	2WU	0.44	16.00	4,130		3,263		
2019CPT.11.22.20142	Caldwell	35	SR 1137	SR 1139	SR 1136	1	2	2WU	1.05	20.00	12,320		9,733		
2019CPT.11.22.20142	Caldwell	36	SR 1138	SR 1139	SR 1136	1	2	2WU	1.15	20.00	13,493		10,660		
2019CPT.11.22.20142	Caldwell	37	SR 1139	PVMT CHG	SR 1140	1	2	2WU	0.62	16.00	5,820		4,598		
2019CPT.11.22.20142	Caldwell	38	SR 1139	SR 1001	PVMT CHG	1	2	2WU	1.66	20.00	19,478		15,387		
2019CPT.11.22.20142	Caldwell	39	SR 1140	SR 1141	SR 1139	2	2	2WU	1.19	16.00		11,170	6,144		
2019CPT.11.22.20142	Caldwell	40	SR 1147	SR 1153	EOM	1	2	2WU	0.51	18.00	5,386		4,255		
2019CPT.11.22.20142	Caldwell	41	SR 1149	SR 1145	EOM	2	2	2WU	0.24	18.00		2,534	1,394		
2019CPT.11.22.20142	Caldwell	42	SR 1208	SR 1151	EOM	2	2	2WU	0.39	18.00		4,118	2,265		
2019CPT.11.22.20142	Caldwell	43	SR 1233	SR 1115	SR 1233 (END LOOP	2	2	2WU	0.53	18.00		5,597	3,078		
2019CPT.11.22.20142	Caldwell	44	SR 1237	SR 1149	EOM	2	2	2WU	0.30	16.00		2,816	1,549		
2019CPT.11.22.20142	Caldwell	45	SR 1245	SR 1001	EOM	2	2	2WU	0.31	20.00		3,637	2,000		
2019CPT.11.22.20142	Caldwell	46	SR 1248	US 321 ALT	EOM	2	2	2WU	0.20	18.00		2,112	1,162		
2019CPT.11.22.20142	Caldwell	47	SR 1249	SR 1146	SR 1295	2	2	2WU	0.28	20.00		3,285	1,807		
2019CPT.11.22.20142	Caldwell	48	SR 1249	SR 1295	EOM	1	2	2WU	0.22	18.00	2,323		1,835		
2019CPT.11.22.20142	Caldwell	49	SR 1253	SR 1153	EOM	1	2	2WU	0.28	18.00	2,957		2,336		
2019CPT.11.22.20142	Caldwell	50	SR 1301	SR 1316	SR 1310	1	2	2WU	0.84	18.00	8,870		7,008		
2019CPT.11.22.20142	Caldwell	51	SR 1313	SR 1309	SR 1310	1	2	2WU	0.62	20.00	7,275		5,747		
2019CPT.11.22.20142	Caldwell	52	SR 1314	MOTHERS WAY	SR 1404	1	2	2WU	0.92	18.00	9,716		7,676		
2019CPT.11.22.20142	Caldwell	53	SR 1315	SR 1310	EOM	1	2	2WU	0.58	18.00	6,125		4,839		
2019CPT.11.22.20142	Caldwell	54	SR 1316	SR 1301	SR 1317	1	2	2WU	1.07	20.00	12,555		9,918		
2019CPT.11.22.20142	Caldwell	55	SR 1324	SR 1322	SR 1326	1	2	2WU	1.44	20.00	16,896		13,348		
2019CPT.11.22.20142	Caldwell	56	SR 1330	SR 1331	BURKE CO	1	2	2WU	0.42	18.00	4,435		3,504		
2019CPT.11.22.20142	Caldwell	57	SR 1332	SR 1331	BURKE CO	1	2	2WU	0.89	20.00	10,443		8,250		
2019CPT.11.22.20142	Caldwell	58	SR 1339	SR 1143	SR 1310	1	2	2WU	1.40	20.00	16,427		12,977		
2019CPT.11.22.20142	Caldwell	59	SR 1341	NC 90	SR 1390	1	2	2WU	1.33	18.00	14,045		11,095		
2019CPT.11.22.20142	Caldwell	60	SR 1341	SR 1390	MP 2.19	1	2	2WU	0.86	18.00	9,082		7,174		
2019CPT.11.22.20142	Caldwell	61	SR 1365	WATAUGA CO	BEG 22' PVMT	1	2	2WU	0.44	18.00	4,646		3,671		
2019CPT.11.22.20142	Caldwell	62	SR 1365	BEG 22' PVMT	EOP	1	2	2WU	0.21	22.00	2,710		2,141		
2019CPT.11.22.20142	Caldwell	63	SR 1382	SR 1314	EOM	1	2	2WU	0.48	16.00	4,506		3,559		
2019CPT.11.22.20142	Caldwell	64	SR 1387	SR 1320	SR 1190	1	2	2WU	0.54	18.00	5,702		4,505		
2019CPT.11.22.20142	Caldwell	65	SR 1388	US 64	EOM	1	2	2WU	0.30	18.00	3,168		2,503		
2019CPT.11.22.20142	Caldwell	66	SR 1389	NC 90	EOM	1	2	2WU	0.59	17.00	5,884		4,649		
2019CPT.11.22.20142	Caldwell	67	SR 1390	SR 1341	EOM	1	2	2WU	0.30	18.00	3,168		2,503		
2019CPT.11.22.20142	Caldwell	68	SR 1391	SR 1307	EOM	1	2	2WU	0.30	18.00	3,168		2,503		
2019CPT.11.22.20142	Caldwell	69	SR 1392	SR 1310	EOM	1	2	2WU	0.21	18.00	2,218		1,752		
2019CPT.11.22.20142	Caldwell	70	SR 1513	SR 1604	US 321	1	2	2WU	0.78	16.00	7,322		5,784		
2019CPT.11.22.20142	Caldwell	71	SR 1702	NC 18	EOM	1	2	2WU	1.00	18.00	10,560		8,342		
2019CPT.11.22.20142	Caldwell	72	SR 1705	NC 18	NC 18	1	2	2WU	0.76	17.00	7,580		5,988		
2019CPT.11.22.20142	Caldwell	73	SR 1908	SR 1249	CUL-DE-SAC	2	2	2WU	0.11	20.00		1,291	710		
2019CPT.11.22.20142	Caldwell	74	SR 1945	SR 1153	EOM	1	2	2WU	0.32	18.00	3,379		2,670		
TOTAL FOR PROJ NO. 2019CPT.11.22.20142															
									32.90		317,803	36,560	271,169		

PROJECT NO.	SHEET NO.	TOTAL NO.
2019CPT.11.21.20032, 2019CPT.11.21.20862 2019CPT.11.21.20992		

SUMMARY OF QUANTITIES

PROJECT NO	COUNTY	MAP NO	ROUTE	FROM DESCRIPTION	TO DESCRIPTION	TYP NO	LANES	LANE TYPE	LENGTH MI	WIDTH FT	ASPHALT SURFACE TREATMENT, TRIPLE SEAL SY	ASPHALT SURFACE TREATMENT, CAPE SEAL SY	EMULSION FOR ASPHALT SURFACE TREATMENT GAL	VACUUM TRUCK WK	BLOTTING SAND TON
2019CPT.11.22.20952	Watauga	75	SR 1131	NC 194	END 20' PVT	1	2	2WU	0.70	20.00	8,213		6,489		
2019CPT.11.22.20952	Watauga	76	SR 1228	SR 1233	EOM	1	2	2WU	0.18	16.00	1,690		1,335		
2019CPT.11.22.20952	Watauga	77	SR 1305	SR 1233	SR 1303	1	2	2WU	1.19	18.00	12,566		9,927		
2019CPT.11.22.20952	Watauga	78	SR 1306	BEG PVT	SR 1303	1	2	2WU	1.58	18.00	16,685		13,181		
2019CPT.11.22.20952	Watauga	79	SR 1306	SR 1303	SR 1233	1	2	2WU	1.11	16.00	10,419		8,231		
2019CPT.11.22.20952	Watauga	80	SR 1312	US 421	SR 1373	1	2	2WU	0.93	20.00	10,912		8,620		
2019CPT.11.22.20952	Watauga	81	SR 1351	SR 1350	SR 1334	1	2	2WU	1.34	18.00	14,150		11,179		
2019CPT.11.22.20952	Watauga	82	SR 1501	PVT CHNG	SR 1505	1	2	2WU	0.94	20.00	11,029		8,713		
2019CPT.11.22.20952	Watauga	83	SR 1503	SR 1505	EOM	1	2	2WU	0.51	18.00	5,386		4,255		
2019CPT.11.22.20952	Watauga	84	SR 1508	SR 1510	BEG 18' PVT	1	2	2WU	0.84	17.00	8,378		6,618		
2019CPT.11.22.20952	Watauga	85	SR 1510	BEG PVT	SR 1508	1	2	2WU	0.09	20.00	1,056		834		
2019CPT.11.22.20952	Watauga	86	SR 1529	SR 1654	CALDWELL CO	1	2	2WU	1.94	18.00	20,486		16,184		
2019CPT.11.22.20952	Watauga	87	SR 1538	SR1539	US321	1	2	2WU	1.62	20.00	19,008		15,016		
2019CPT.11.22.20952	Watauga	88	SR 1547	SR 1549	SCL BOONE	1	2	2WU	0.28	20.00	3,285		2,595		
2019CPT.11.22.20952	Watauga	89	SR 1549	SCL BOONE	SR 1547	1	2	2WU	0.22	18.00	2,323		1,835		
2019CPT.11.22.20952	Watauga	90	SR 1554	SR 1552	EOM	1	2	2WU	0.59	18.00	6,230		4,922		
2019CPT.11.22.20952	Watauga	91	SR 1557	SR 1568	SR 1558	1	2	2WU	0.20	20.00	2,347		1,854		
2019CPT.11.22.20952	Watauga	92	SR 1559	BEG PVT	SR 1560	1	2	2WU	0.26	18.00	2,746		2,169		
2019CPT.11.22.20952	Watauga	93	SR 1569	SR 1508	BEG 16' PVT	1	2		0.10	18.00	1,056		834		
2019CPT.11.22.20952	Watauga	94	SR 1569	BEG 16' PVT	EOM	1	2	2WU	0.40	16.00	3,755		2,966		
2019CPT.11.22.20952	Watauga	95	SR 1580	NC 105	EOM	2	2	2WU	0.35	18.00		3,696	2,033		
2019CPT.11.22.20952	Watauga	96	SR 1630	SR 1523	SR 1630	2	2	2WU	3.25	20.00		38,133	20,973		
2019CPT.11.22.20952	Watauga	97	SR 1636	SR 1524	EOM	1	2	2WU	0.32	20.00	3,754		2,966		
2019CPT.11.22.20952	Watauga	98	SR 1638	SR 1547	END 17' PVT	2	2	2WU	0.47	17.00		4,687	2,578		
2019CPT.11.22.20952	Watauga	99	SR 1638	END 17' PVT	EOM	2	2	2WU	0.20	14.00		1,643	904		
2019CPT.11.22.20952	Watauga	100	SR 1650	SR 1602	EOM	2	2	2WU	0.09	16.00		845	465		
2019CPT.11.22.20952	Watauga	101	SR 1652	SR 1513	EOM	2	2	2WU	0.28	18.00		2,957	1,626		
2019CPT.11.22.20952	Watauga	102	SR 1654	SR 1529	EOM	2	2	2WU	0.25	16.00		2,347	1,291		
2019CPT.11.22.20952	Watauga	103	SR 1656	SR 1524	EOM	2	2	2WU	0.25	16.00		2,347	1,291		
2019CPT.11.22.20952	Watauga	104	SR 1663	SR 1524	EOM	2	2	2WU	0.26	18.00		2,746	1,510		
TOTAL FOR PROJ NO. 2019CPT.11.22.20952											165,474	59,401	163,394		

GRAND TOTAL									75.71		705,152	95,961	609,845	5	400
--------------------	--	--	--	--	--	--	--	--	--------------	--	----------------	---------------	----------------	----------	------------

PROJECT NO.	SHEET NO.	TOTAL NO.
2019CPT.11.21.20032, 2019CPT.11.21.20862 2019CPT.11.21.20992		

THERMOPLASTIC AND PAINT QUANTITIES

PROJECT NO	COUNTY	MAP NO	ROUTE	FROM DESCRIPTION	TO DESCRIPTION	TYP NO	LANES	LANE TYPE	LENGTH MI	WIDTH FT	4413000000-E	4457000000-N	4810000000-E	4810000000-E	4835000000-E	4840000000-N	
											WORK ZONE ADVANCE/GENERAL WARNING SIGNING	TEMPORARY TRAFFIC CONTROL	4" WHITE PAINT	4" YELLOW PAINT	24" WHITE PAINT	PAINT PAVEMENT MARKING CHARACTER EA	
												SF	LS	LF	LF	LF	
2019CPT.11.22.10062	Avery	1	NC 194	US 19E	SR 1106	1	2	2WU	0.91	18	64	1.00	19,219	19,219			
TOTAL FOR PROJ NO. 2019CPT.11.22.10062												64	1.00	19,219	19,219		

2019CPT.11.22.20062	Avery	2	SR 1117	SR 1114	EOM	1	2	2WU	1.32	16	128		27,878	27,878	20	12	
2019CPT.11.22.20062	Avery	3	SR 1132	US 19E	EOP	1	2	2WU	3.58	16	256		75,610	75,610			
2019CPT.11.22.20062	Avery	4	SR 1133	SR 1132	EOM	1	2	2WU	2.23	18	192		47,098	47,098			
2019CPT.11.22.20062	Avery	5	SR 1134	SR 1132	EOM	1	2	2WU	0.82	16	64		-	-			
2019CPT.11.22.20062	Avery	6	SR 1135	SR 1132	EOM	1	2	2WU	0.50	16	64		-	-			
2019CPT.11.22.20062	Avery	7	SR 1163	SR 1157	EOP	1	2	2WU	1.55	16	128		32,736	32,736			
2019CPT.11.22.20062	Avery	8	SR 1173	SR 1303	EOM	2	2	2WU	1.65	18	128		34,848	34,848			
2019CPT.11.22.20062	Avery	9	SR 1179	NC 194	EOM	2	2	2WU	0.20	16	64		-	-			
2019CPT.11.22.20062	Avery	10	SR 1186	SR 1166	EOM	1	2	2WU	0.20	16	64		-	-			
2019CPT.11.22.20062	Avery	11	SR 1190	US 19E	EOM	1	2	2WU	0.10	20	64		-	-			
2019CPT.11.22.20062	Avery	12	SR 1191	US 19E	BEG CONC PVMT	1	2	2WU	0.14	20	64		2,957	2,957			
2019CPT.11.22.20062	Avery	13	SR 1197	SR 1174	EOM	1	2	2WU	0.32	16	64		-	-			
2019CPT.11.22.20062	Avery	14	SR 1302	SR 1301	TN LINE	1	2	2WU	0.87	18	64		18,374	18,374			
2019CPT.11.22.20062	Avery	15	SR 1314	SR 1312	US 321	1	2	2WU	0.62	17	64		13,094	13,094			
2019CPT.11.22.20062	Avery	16	SR 1317	SR 1316	TN STATE LN	1	2	2WU	0.49	18	64		10,349	10,349			
2019CPT.11.22.20062	Avery	17	SR 1324	SR 1321	EOM	1	2	2WU	1.21	18	128		25,555	25,555			
2019CPT.11.22.20062	Avery	18	SR 1326	NC 194	EOM	1	2	2WU	0.50	18	64		-	-			
2019CPT.11.22.20062	Avery	19	SR 1372	NC 181	EOM	1	2	2WU	0.16	21	64		-	-			
2019CPT.11.22.20062	Avery	20	SR 1379	SR 1316	SR 1310	1	2	2WU	1.54	18	128		32,525	32,525			
2019CPT.11.22.20062	Avery	21	SR 1503	US 221	EOM	1	2	2WU	0.50	16	64		-	-			
2019CPT.11.22.20062	Avery	22	SR 1505	US 221	SR 1504	1	2	2WU	0.19	18	64		4,013	4,013			
2019CPT.11.22.20062	Avery	23	SR 1510	US 221	EOM	1	2	2WU	0.71	16	64		-	-			
2019CPT.11.22.20062	Avery	24	SR 1527	BEG PVMT	EOM	1	2	2WU	0.30	18	64		-	-			
2019CPT.11.22.20062	Avery	25	SR 1543	SR 1501	SR 1501	1	2	2WU	1.46	18	128		30,835	30,835			
TOTAL FOR PROJ NO. 2019CPT.11.22.20062												2,240		355,872	355,872	20	12

PROJECT NO.	SHEET NO.	TOTAL NO.
2019CPT.11.21.20032, 2019CPT.11.21.20862		
2019CPT.11.21.20992		

THERMOPLASTIC AND PAINT QUANTITIES

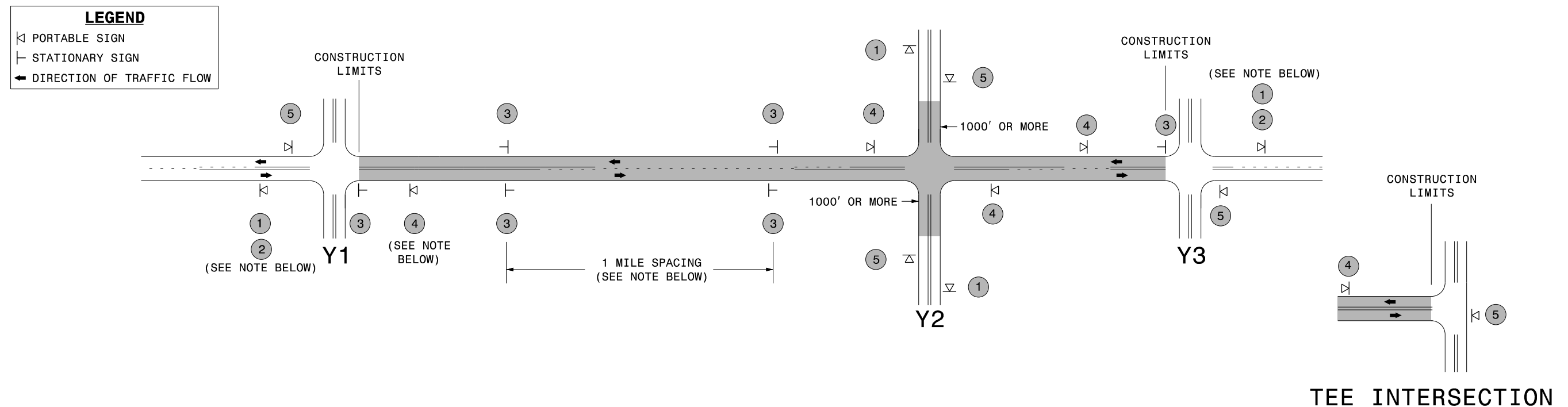
PROJECT NO	COUNTY	MAP NO	ROUTE	FROM DESCRIPTION	TO DESCRIPTION	TYP NO	LANES	LANE TYPE	LENGTH MI	WIDTH FT	441300000-E	445700000-N	481000000-E	481000000-E	483500000-E	484000000-N
											WORK ZONE ADVANCE/GENERAL WARNING SIGNING SF	TEMPORARY TRAFFIC CONTROL LS	4" WHITE PAINT LF	4" YELLOW PAINT LF	24" WHITE PAINT LF	PAINT PAVEMENT MARKING CHARACTER EA
2019CPT.11.22.20142	Caldwell	26	SR 1102	US 321 ALT	EOM	1	2	2WU	0.20	18.00	64		-	-	20	12
2019CPT.11.22.20142	Caldwell	27	SR 1110	SR 1109	EOM	1	2	2WU	0.61	18.00	64		-	-		
2019CPT.11.22.20142	Caldwell	28	SR 1112	SR 1115	SR 1199	1	2	2WU	0.43	18.00	64		9,082	9,082		
2019CPT.11.22.20142	Caldwell	29	SR 1123	SR 1124	SR 1130	1	2	2WU	1.58	18.00	128		33,370	33,370		
2019CPT.11.22.20142	Caldwell	30	SR 1127	SR 1123	SR 1212	1	2	2WU	1.19	18.00	128		25,133	25,133		
2019CPT.11.22.20142	Caldwell	31	SR 1127	SR 1212	MP 1.85	1	2	2WU	0.66	18.00	128		28,301	28,301		
2019CPT.11.22.20142	Caldwell	32	SR 1127	MP 1.85	SR 1130	1	2	2WU	1.34	18.00	64		13,939	13,939		
2019CPT.11.22.20142	Caldwell	33	SR 1132	SR 1130	EOM	1	2	2WU	0.81	18.00	64		-	-		
2019CPT.11.22.20142	Caldwell	34	SR 1136	SR 1135	SR 1001	1	2	2WU	0.44	16.00	64		9,293	9,293		
2019CPT.11.22.20142	Caldwell	35	SR 1137	SR 1139	SR 1136	1	2	2WU	1.05	20.00	128		22,176	22,176		
2019CPT.11.22.20142	Caldwell	36	SR 1138	SR 1139	SR 1136	1	2	2WU	1.15	20.00	128		24,288	24,288		
2019CPT.11.22.20142	Caldwell	37	SR 1139	PVMT CHG	SR 1140	1	2	2WU	0.62	16.00	64		13,094	13,094		
2019CPT.11.22.20142	Caldwell	38	SR 1139	SR 1001	PVMT CHG	1	2	2WU	1.66	20.00	128		35,060	35,060		
2019CPT.11.22.20142	Caldwell	39	SR 1140	SR 1141	SR 1139	2	2	2WU	1.19	16.00	128		25,133	25,133		
2019CPT.11.22.20142	Caldwell	40	SR 1147	SR 1153	EOM	1	2	2WU	0.51	18.00	64		-	-		
2019CPT.11.22.20142	Caldwell	41	SR 1149	SR 1145	EOM	2	2	2WU	0.24	18.00	64		-	-		
2019CPT.11.22.20142	Caldwell	42	SR 1208	SR 1151	EOM	2	2	2WU	0.39	18.00	64		-	-		
2019CPT.11.22.20142	Caldwell	43	SR 1233	SR 1115	SR 1233 (END LOOP)	2	2	2WU	0.53	18.00	64		11,194	11,194		
2019CPT.11.22.20142	Caldwell	44	SR 1237	SR 1149	EOM	2	2	2WU	0.30	16.00	64		-	-		
2019CPT.11.22.20142	Caldwell	45	SR 1245	SR 1001	EOM	2	2	2WU	0.31	20.00	64		-	-		
2019CPT.11.22.20142	Caldwell	46	SR 1248	US 321 ALT	EOM	2	2	2WU	0.20	18.00	64		-	-		
2019CPT.11.22.20142	Caldwell	47	SR 1249	SR 1146	SR 1295	2	2	2WU	0.28	20.00	64		5,914	5,914		
2019CPT.11.22.20142	Caldwell	48	SR 1249	SR 1295	EOM	1	2	2WU	0.22	18.00	64		-	-		
2019CPT.11.22.20142	Caldwell	49	SR 1253	SR 1153	EOM	1	2	2WU	0.28	18.00	64		-	-		
2019CPT.11.22.20142	Caldwell	50	SR 1301	SR 1316	SR 1310	1	2	2WU	0.84	18.00	64		17,741	17,741		
2019CPT.11.22.20142	Caldwell	51	SR 1313	SR 1309	SR 1310	1	2	2WU	0.62	20.00	64		13,094	13,094		
2019CPT.11.22.20142	Caldwell	52	SR 1314	MOTHERS WAY	SR 1404	1	2	2WU	0.92	18.00	64		19,432	19,432		
2019CPT.11.22.20142	Caldwell	53	SR 1315	SR 1310	EOM	1	2	2WU	0.58	18.00	64		-	-		
2019CPT.11.22.20142	Caldwell	54	SR 1316	SR 1301	SR 1317	1	2	2WU	1.07	20.00	128		22,598	22,598		
2019CPT.11.22.20142	Caldwell	55	SR 1324	SR 1322	SR 1326	1	2	2WU	1.44	20.00	128		30,413	30,413		
2019CPT.11.22.20142	Caldwell	56	SR 1330	SR 1331	BURKE CO	1	2	2WU	0.42	18.00	64		8,870	8,870		
2019CPT.11.22.20142	Caldwell	57	SR 1332	SR 1331	BURKE CO	1	2	2WU	0.89	20.00	64		18,797	18,797		
2019CPT.11.22.20142	Caldwell	58	SR 1339	SR 1143	SR 1310	1	2	2WU	1.40	20.00	128		29,568	29,568		
2019CPT.11.22.20142	Caldwell	59	SR 1341	NC 90	SR 1390	1	2	2WU	1.33	18.00	128		28,090	28,090		
2019CPT.11.22.20142	Caldwell	60	SR 1341	SR 1390	MP 2.19	1	2	2WU	0.86	18.00	64		18,163	18,163		
2019CPT.11.22.20142	Caldwell	61	SR 1365	WATAUGA CO	BEG 22' PVMT	1	2	2WU	0.44	18.00	64		9,293	9,293		
2019CPT.11.22.20142	Caldwell	62	SR 1365	BEG 22' PVMT	EOP	1	2	2WU	0.21	22.00	64		4,435	4,435		
2019CPT.11.22.20142	Caldwell	63	SR 1382	SR 1314	EOM	1	2	2WU	0.48	16.00	64		-	-		
2019CPT.11.22.20142	Caldwell	64	SR 1387	SR 1320	SR 1190	1	2	2WU	0.54	18.00	64		11,405	11,405		
2019CPT.11.22.20142	Caldwell	65	SR 1388	US 64	EOM	1	2	2WU	0.30	18.00	64		-	-		
2019CPT.11.22.20142	Caldwell	66	SR 1389	NC 90	EOM	1	2	2WU	0.59	17.00	64		-	-		
2019CPT.11.22.20142	Caldwell	67	SR 1390	SR 1341	EOM	1	2	2WU	0.30	18.00	64		-	-		
2019CPT.11.22.20142	Caldwell	68	SR 1391	SR 1307	EOM	1	2	2WU	0.30	18.00	64		-	-		
2019CPT.11.22.20142	Caldwell	69	SR 1392	SR 1310	EOM	1	2	2WU	0.21	18.00	64		-	-		
2019CPT.11.22.20142	Caldwell	70	SR 1513	SR 1604	US 321	1	2	2WU	0.78	16.00	64		16,474	16,474		
2019CPT.11.22.20142	Caldwell	71	SR 1702	NC 18	EOM	1	2	2WU	1.00	18.00	64		21,120	21,120		
2019CPT.11.22.20142	Caldwell	72	SR 1705	NC 18	NC 18	1	2	2WU	0.76	17.00	64		16,051	16,051		
2019CPT.11.22.20142	Caldwell	73	SR 1908	SR 1249	CUL-DE-SAC	2	2	2WU	0.11	20.00	64		2,323	2,323		
2019CPT.11.22.20142	Caldwell	74	SR 1945	SR 1153	EOM	1	2	2WU	0.32	18.00	64		-	-		
TOTAL FOR PROJ NO. 2019CPT.11.22.20142											3,840		543,844	543,844	20	12

PROJECT NO.	SHEET NO.	TOTAL NO.
2019CPT.11.21.20032, 2019CPT.11.21.20862 2019CPT.11.21.20992		

THERMOPLASTIC AND PAINT QUANTITIES

PROJECT NO	COUNTY	MAP NO	ROUTE	FROM DESCRIPTION	TO DESCRIPTION	TYP NO	LANES	LANE TYPE	LENGTH MI	WIDTH FT	441300000-E	445700000-N	481000000-E	481000000-E	483500000-E	484000000-N
											WORK ZONE ADVANCE/GENERAL WARNING SIGNING SF	TEMPORARY TRAFFIC CONTROL LS	4" WHITE PAINT LF	4" YELLOW PAINT LF	24" WHITE PAINT LF	PAINT PAVEMENT MARKING CHARACTER EA
2019CPT.11.22.20952	Watauga	75	SR 1131	NC 194	END 20' PVMT	1	2	2WU	0.70	20.00	64		14,784	14,784	20	12
2019CPT.11.22.20952	Watauga	76	SR 1228	SR 1233	EOM	1	2	2WU	0.18	16.00	64		-	-		
2019CPT.11.22.20952	Watauga	77	SR 1305	SR 1233	SR 1303	1	2	2WU	1.19	18.00	128		25,133	25,133		
2019CPT.11.22.20952	Watauga	78	SR 1306	BEG PVMT	SR 1303	1	2	2WU	1.58	18.00	128		33,370	33,370		
2019CPT.11.22.20952	Watauga	79	SR 1306	SR 1303	SR 1233	1	2	2WU	1.11	16.00	128		23,443	23,443		
2019CPT.11.22.20952	Watauga	80	SR 1312	US 421	SR 1373	1	2	2WU	0.93	20.00	64		19,642	19,642		
2019CPT.11.22.20952	Watauga	81	SR 1351	SR 1350	SR 1334	1	2	2WU	1.34	18.00	128		28,301	28,301		
2019CPT.11.22.20952	Watauga	82	SR 1501	PVMT CHNG	SR 1505	1	2	2WU	0.94	20.00	64		19,853	19,853		
2019CPT.11.22.20952	Watauga	83	SR 1503	SR 1505	EOM	1	2	2WU	0.51	18.00	64		-	-		
2019CPT.11.22.20952	Watauga	84	SR 1508	SR 1510	BEG 18' PVT	1	2	2WU	0.84	17.00	64		17,741	17,741		
2019CPT.11.22.20952	Watauga	85	SR 1510	BEG PVMT	SR 1508	1	2	2WU	0.09	20.00	64		1,901	1,901		
2019CPT.11.22.20952	Watauga	86	SR 1529	SR 1654	CALDWELL CO	1	2	2WU	1.94	18.00	128		40,973	40,973		
2019CPT.11.22.20952	Watauga	87	SR 1538	SR1539	US321	1	2	2WU	1.62	20.00	128		34,214	34,214		
2019CPT.11.22.20952	Watauga	88	SR 1547	SR 1549	SCL BOONE	1	2	2WU	0.28	20.00	64		5,914	5,914		
2019CPT.11.22.20952	Watauga	89	SR 1549	SCL BOONE	SR 1547	1	2	2WU	0.22	18.00	64		4,646	4,646		
2019CPT.11.22.20952	Watauga	90	SR 1554	SR 1552	EOM	1	2	2WU	0.59	18.00	64		-	-		
2019CPT.11.22.20952	Watauga	91	SR 1557	SR 1568	SR 1558	1	2	2WU	0.20	20.00	64		4,224	4,224		
2019CPT.11.22.20952	Watauga	92	SR 1559	BEG PVMT	SR 1560	1	2	2WU	0.26	18.00	64		5,491	5,491		
2019CPT.11.22.20953	Watauga	93	SR 1569	SR 1508	BEG 16' PVT	1	2	2WU	0.10	18.00	64		2,112	2,112		
2019CPT.11.22.20952	Watauga	94	SR 1569	BEG 16' PVT	EOM	1	2	2WU	0.40	16.00	64		-	-		
2019CPT.11.22.20952	Watauga	95	SR 1580	NC 105	EOM	2	2	2WU	0.35	18.00	64		-	-		
2019CPT.11.22.20952	Watauga	96	SR 1630	SR 1523	SR 1630	2	2	2WU	3.25	20.00	256		68,640	68,640		
2019CPT.11.22.20952	Watauga	97	SR 1636	SR 1524	EOM	1	2	2WU	0.32	20.00	64		-	-		
2019CPT.11.22.20952	Watauga	98	SR 1638	SR 1547	END 17' PVT	2	2	2WU	0.47	17.00	64		9,926	9,926		
2019CPT.11.22.20952	Watauga	99	SR 1638	END 17' PVT	EOM	2	2	2WU	0.20	14.00	64		-	-		
2019CPT.11.22.20952	Watauga	100	SR 1650	SR 1602	EOM	2	2	2WU	0.09	16.00	64		-	-		
2019CPT.11.22.20952	Watauga	101	SR 1652	SR 1513	EOM	2	2	2WU	0.28	18.00	64		-	-		
2019CPT.11.22.20952	Watauga	102	SR 1654	SR 1529	EOM	2	2	2WU	0.25	16.00	64		-	-		
2019CPT.11.22.20952	Watauga	103	SR 1656	SR 1524	EOM	2	2	2WU	0.25	16.00	64		-	-		
2019CPT.11.22.20952	Watauga	104	SR 1663	SR 1524	EOM	2	2	2WU	0.26	18.00	64		-	-		
TOTAL FOR PROJ NO. 2019CPT.11.22.20952											2,496	1	360,308	360,308	20	12
GRAND TOTAL											8,640	1	1,279,243	1,279,243	60	36

SIGNING FOR ASPHALT SURFACE TREATMENT



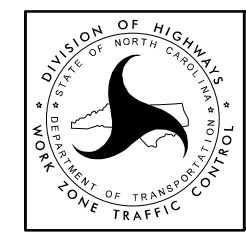
MAINLINE (-L-) SIGNING

-Y- LINE SIGNING

SIGNING NOTES AND PLACEMENT PER DIRECTION	1	 	<ul style="list-style-type: none"> - PLACE 1000' PRIOR TO BEGINNING OF CONSTRUCTION LIMITS. ONLY USED ON -Y- LINES IF RESURFACING LIMITS EXTEND 1000' ALONG -Y- LINE. - SIGN #2 ONLY USED WHEN RESURFACING LIMITS ARE 2 OR MORE MILES IN LENGTH. ROUND UP TO THE NEAREST WHOLE NUMBER. DO NOT USE FRACTIONAL OR DECIMAL NUMBERS. 	<p>STATIONARY SIGNING NOT REQUIRED FOR THE FOLLOWING -Y- LINE CONDITIONS:</p> <ol style="list-style-type: none"> 1) LESS THAN 1000' OF RESURFACING ALONG -Y- LINE 2) SUBDIVISION ROADS 3) DEAD END ROADS <p>WHEN PAVING/CONSTRUCTION ACTIVITIES PROCEED ACROSS AN UNSIGNED -Y- LINE, PORTABLE ADVANCE WARNING SIGNS SHALL BE USED ALONG THE -Y- LINE AS SHOWN BELOW. REMOVE UPON COMPLETION OF WORK.</p> <div style="display: flex; justify-content: space-around; align-items: center;"> <div style="text-align: center;"> PLACED 500' IN ADVANCE OF FLAGGER. </div> <div style="text-align: center;"> PLACED 250' IN ADVANCE OF FLAGGER. </div> </div>
	3	 	<ul style="list-style-type: none"> - ALTERNATE THE FOLLOWING TWO SIGNS: - STARTING WITH "LOOSE GRAVEL" (W8-7) FOLLOWED BY "UNMARKED PAVEMENT". - PLACE INITIALLY AT THE CONSTRUCTION LIMITS AND SPACED 1 MILE APART THEREAFTER. - AT TEE INTERSECTIONS INSTALL INITIALLY 0.5 MILE FROM INTERSECTION AND SPACE 1 MILE APART THEREAFTER. 	
	4		<ul style="list-style-type: none"> - THESE ARE FOR -Y- LINES THAT ARE "THROUGH" ROADWAYS. DEAD END AND SUBDIVISION ROADS ARE NOT "THROUGH" ROADWAYS. - INSTALL 500' +/- FROM EACH -Y- LINE APPROACH AS SHOWN ABOVE. - FOR MULTIPLE -Y- LINES THAT ARE SEPARATED BY 0.25 MILES OR LESS, TREAT AS A SINGLE UNIT AND INSTALL WITHIN 500' OF EACH APPROACH. - A MAXIMUM OF 2 SIGN SETS PER MILE. DO NOT INSTALL WHEN -Y- LINES ARE WITHIN 0.5 MILES FROM "END ROAD WORK" SIGN. 	
	5		<ul style="list-style-type: none"> PLACE 500' FOLLOWING THE END OF CONSTRUCTION LIMITS OR AS SHOWN WHEN WORK ENDS AT A 3-WAY TEE INTERSECTION. 	
	<p>THE ABOVE SIGNS ARE ALL THAT ARE REQUIRED FOR A CONTRACTOR TO BEGIN A RESURFACING CONTRACT. ANY ADDITIONAL SIGNS REQUESTED BY NCDOT DIVISIONS SHALL BE INSTALLED WITHIN 7 BUSINESS DAYS OF THE START OF CONTRACT WORK.</p>			

MAPS LESS THAN 2 MILES

FOR AST RESURFACING MAPS WITH CONSTRUCTION LIMITS LESS THAN 2 MILES IN LENGTH, USE A STATIONARY "LOOSE GRAVEL" SIGN AT THE BEGINNING CONSTRUCTION LIMIT FOLLOWED BY AN "UNMARKED PAVEMENT" SIGN MIDWAY THROUGH AND AN "END ROAD WORK" SIGN AT THE END CONSTRUCTION LIMIT.



ADVANCE WARNING SIGNS FOR 2-LANE ROADWAY ASPHALT SURFACE TREATMENT